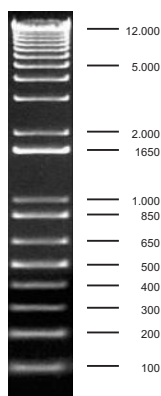


DATA SHEET

**Star 1 kb DNA Ladder**

100 bp to 12 kb
 ready-to-use, purple

Cat. Nº.	Amount
■ MMK-135S	500 µl (180 ng/µl)
□ MMK-135L	5 x 500 µl (180 ng/µl)



5 µl loaded (0.9 µg) onto 0.9% agarose

For *in vitro* use only!

Shipping:

Shipped on blue ice

Storage Conditions:

Store at -20 °C

Short term storage (up to 1 month) at 4 °C possible.

Shelf Life:

12 months

Form:

Liquid, blue, DNA fragment mix in 10 mM Tris-HCl pH 7.5, 10 mM EDTA, 10 % (w/v) Glycerol, Bromophenol Blue and Xylene Cyanol FF, Amaranth

Concentration:

180 ng/µl

Description:

Star 1 kb DNA Ladder consists of 19 DNA fragments ranging from 100 bp to 12 kb. The ladder allows sizing and concentration estimate of DNA fragments on agarose gels generated by PCR or restriction digest. The fragment mix is supplied in ready-to-use format containing blue and red tracking dyes.

Recommended load:

5 µl per lane

DNA Fragments

100, 200, 300, 400, 500, 650, 850, 1000, 1650, 2k, 3k, 4k, 5k, 6k, 7k, 8k, 9k, 10k, 12k bp